

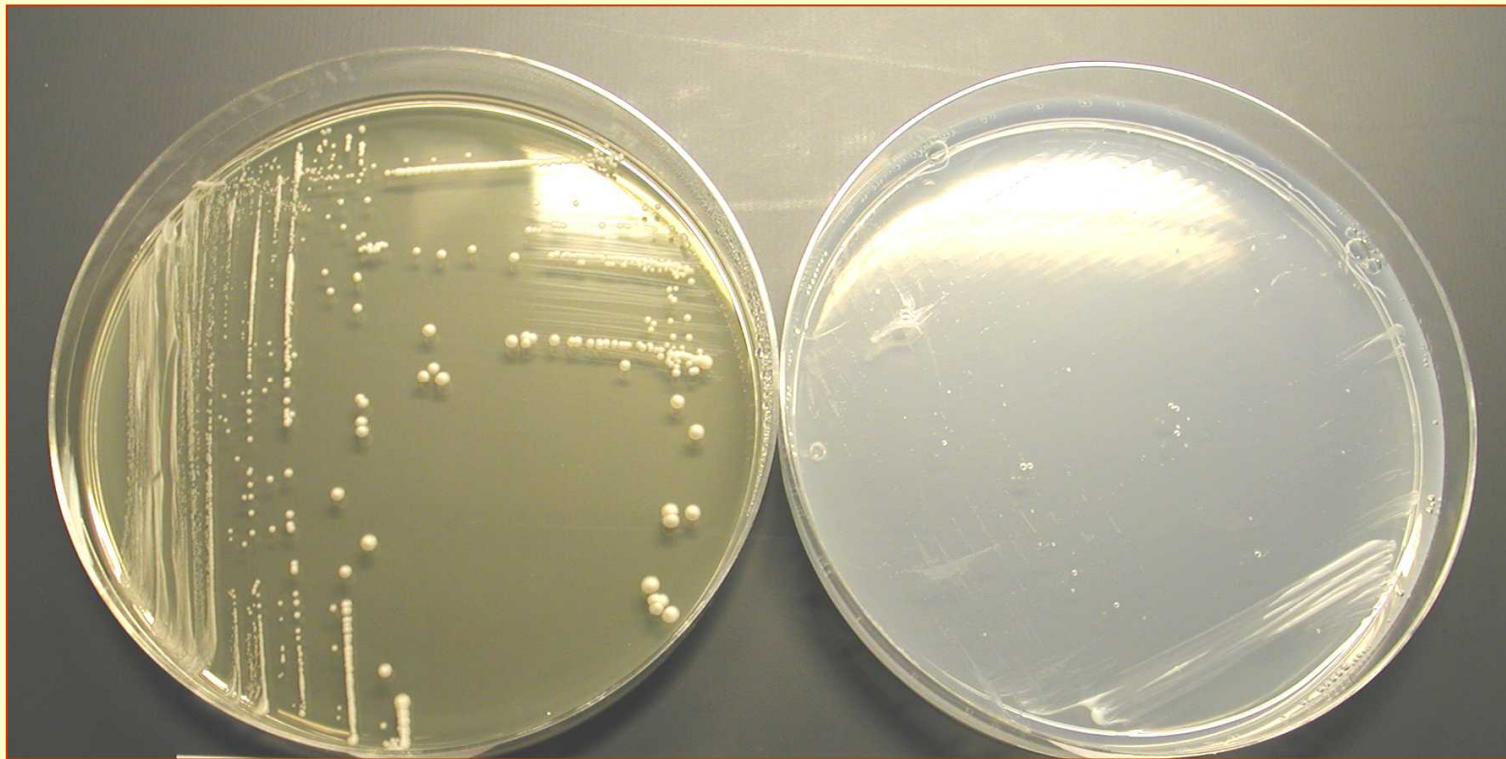
Saccharomyces cerevisiae 68 (Referenzstamm)



YPG-A

Lysin-A

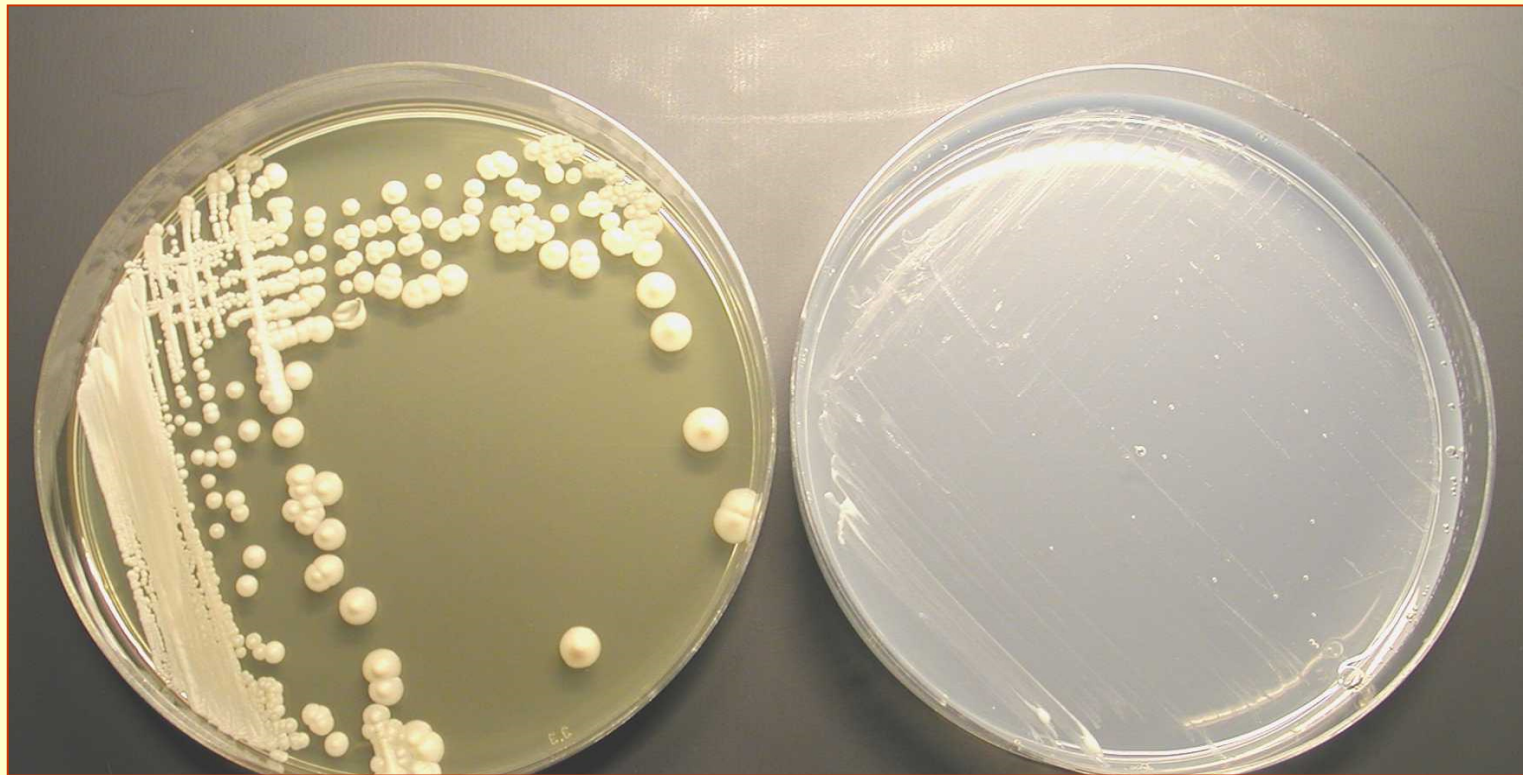
Saccharomyces carlsbergensis 34/70 (Referenzstamm)



YPG-A

Lysin-A

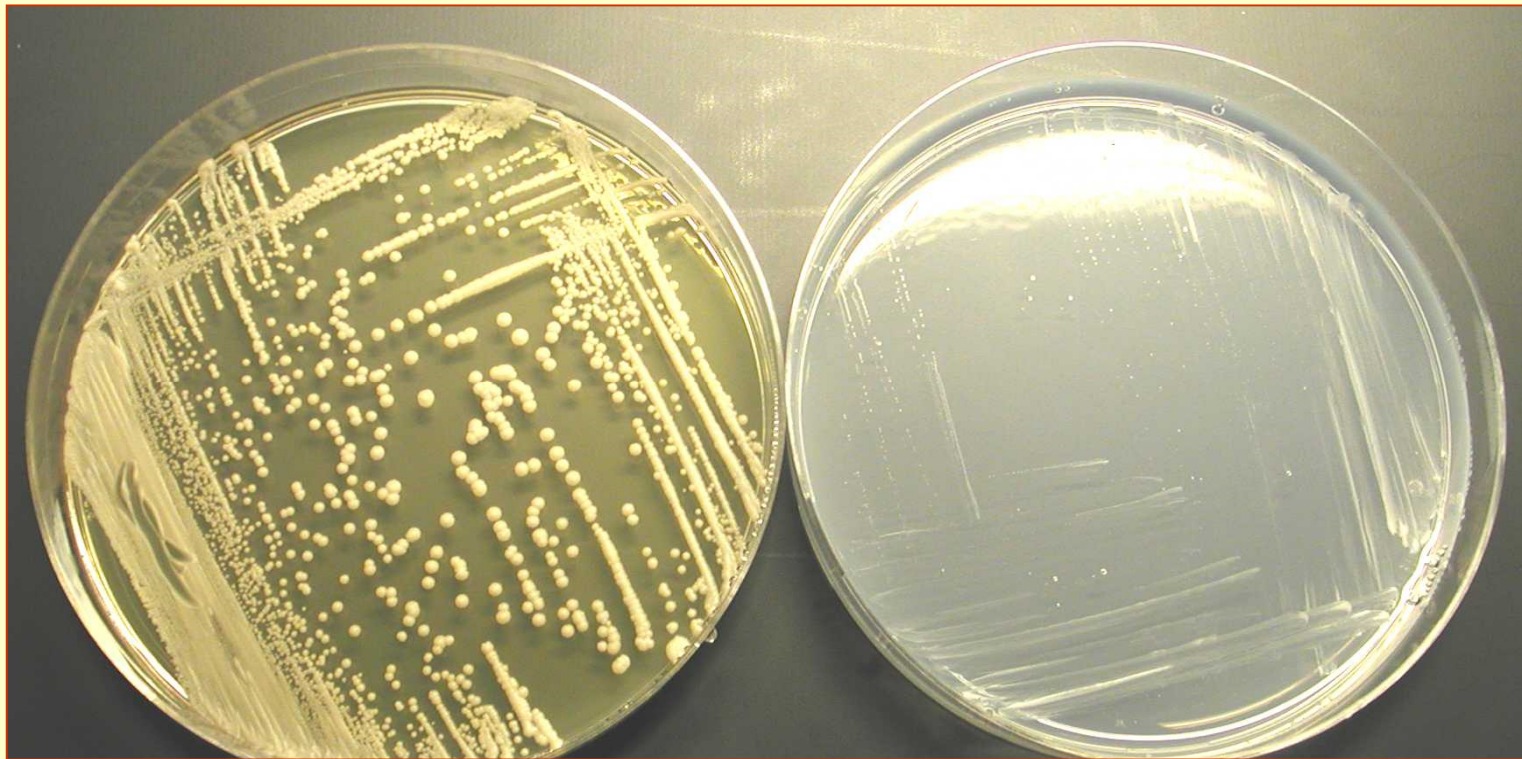
Saccharomyces carlsbergensis 69 (Referenzstamm)



YPG-A

Lysin-A

Saccharomyces carlsbergensis 71 (Referenzstamm)



YPG-A

Lysin-A

Saccharomyces carlsbergensis

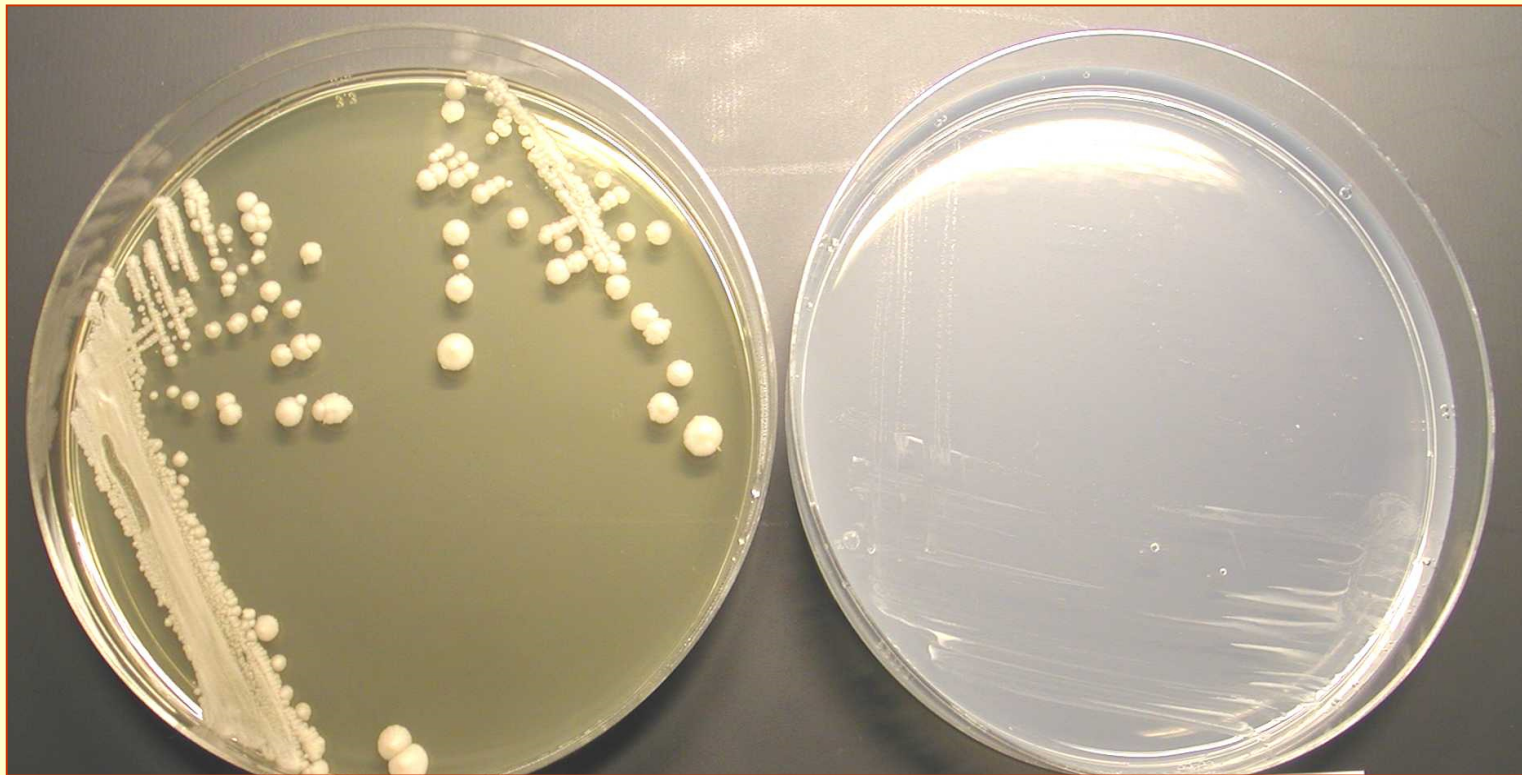
DSM 8483 (Referenzstamm)



YPG-A

Lysin-A

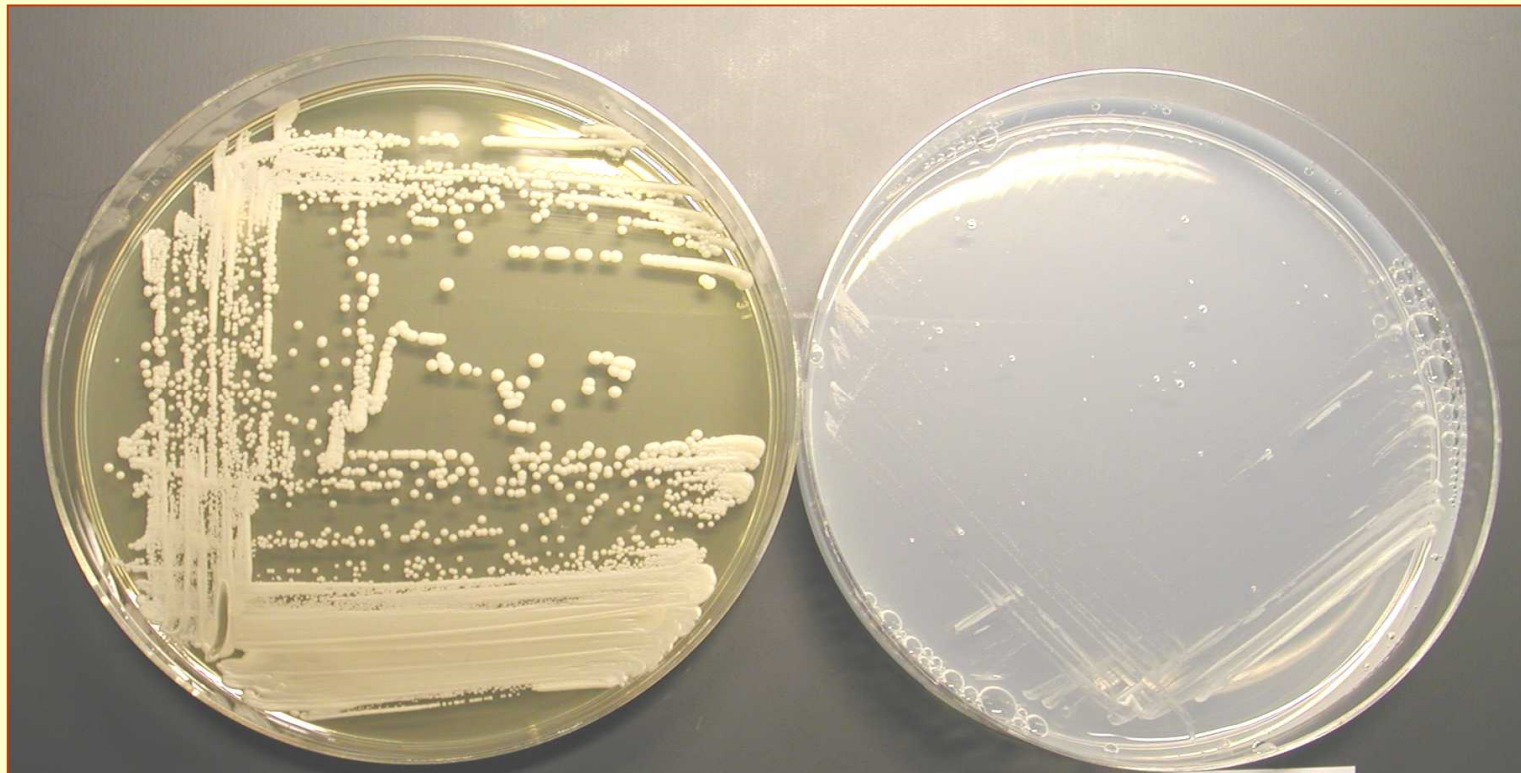
Mischkultur von Brauerei Innstadt Passau



YPG-A

Lysin-A

Mischkultur von Brauerei Weihenstephan, Freising



YPG-A

Lysin-A

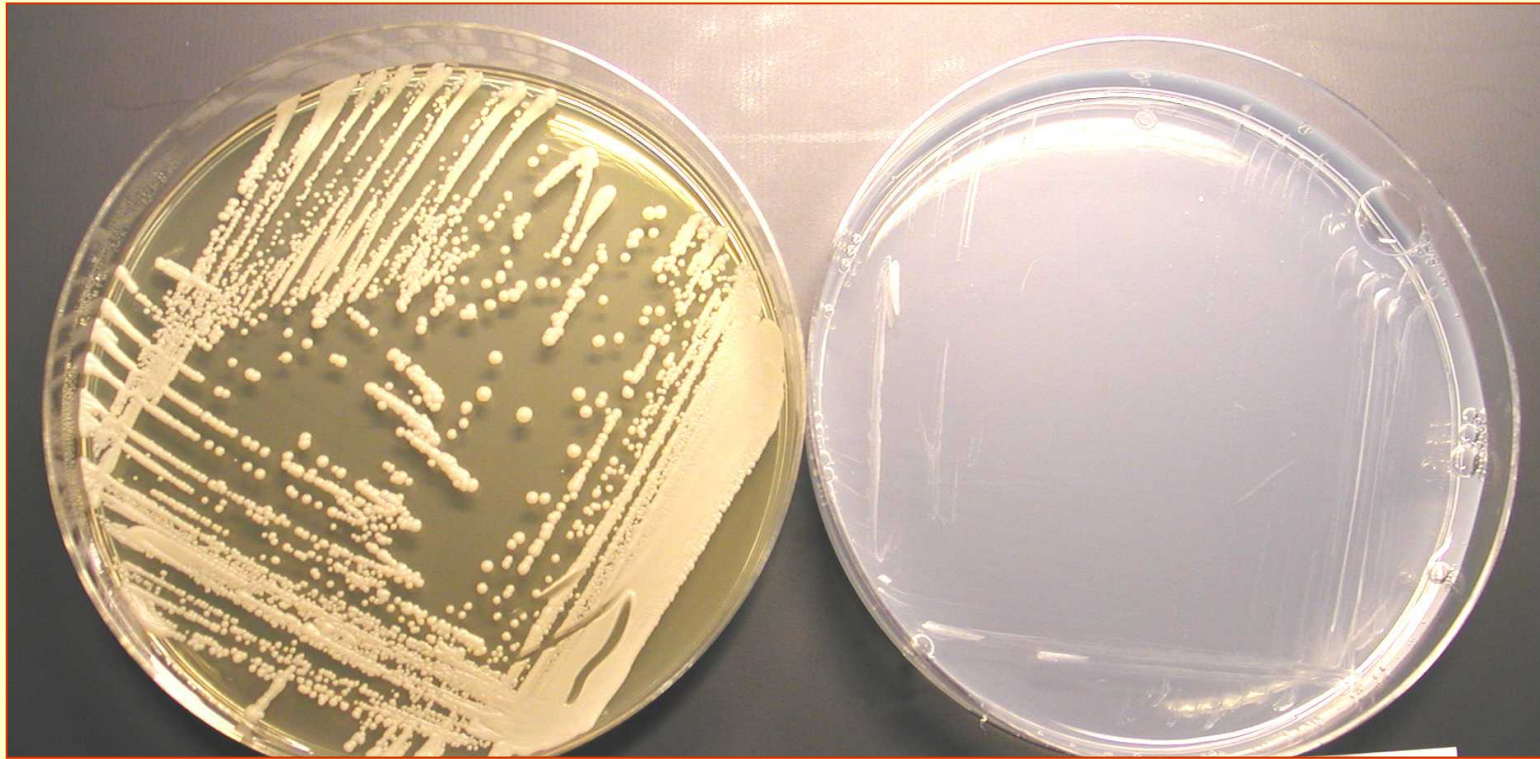
Mischkultur von Brauerei Löwen Passau



YPG-A

Lysin-A

Saccharomyces cerevisiae D-273/100



YPG-A

Lysin-A

Saccharomyces cerevisiae S-6/1

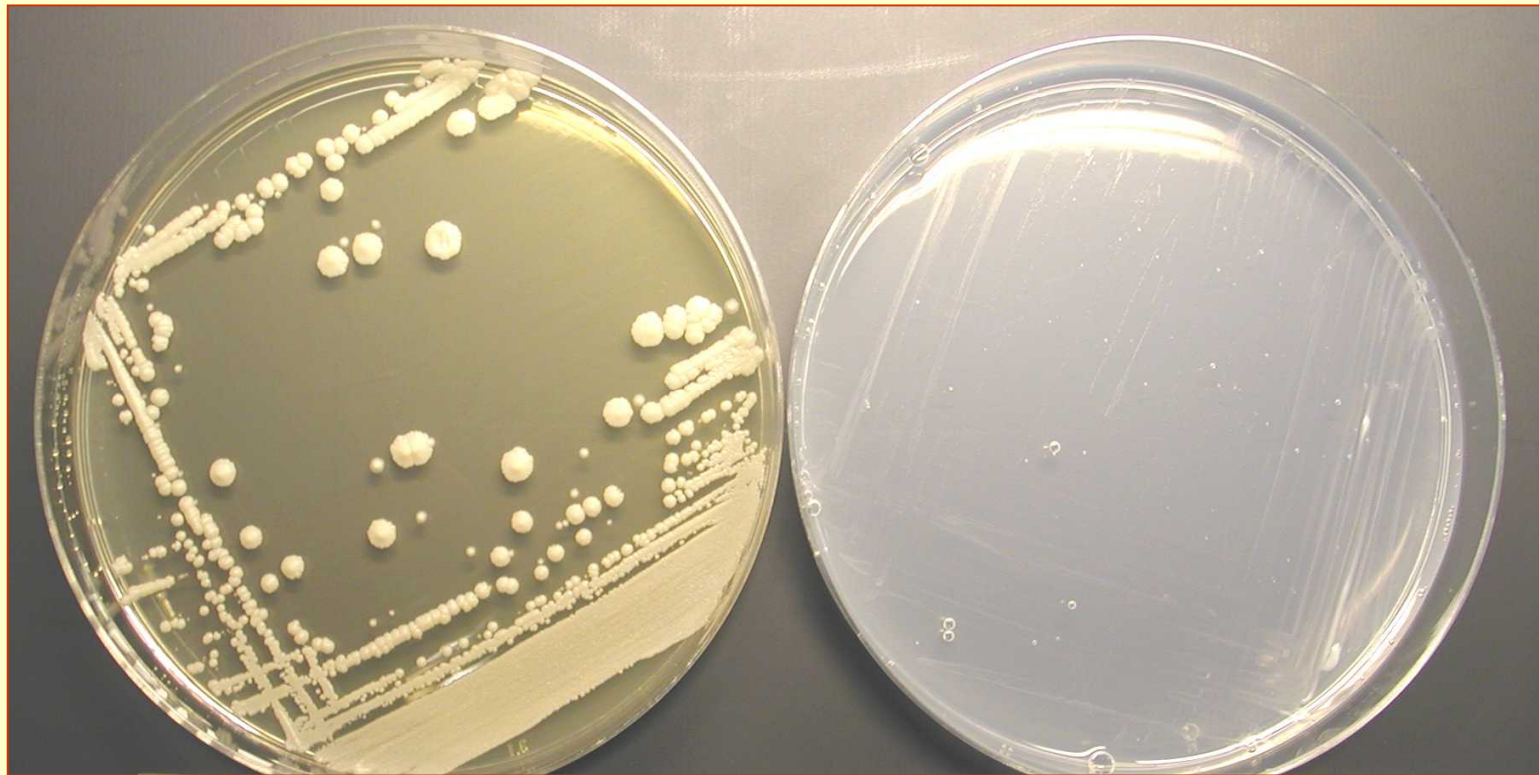


YPG-A

Lysin-A

Saccharomyces diastaticus

ATCC 60270



YPG-A

Lysin-A

Candida valida 70178



YPG-A

Lysin-A

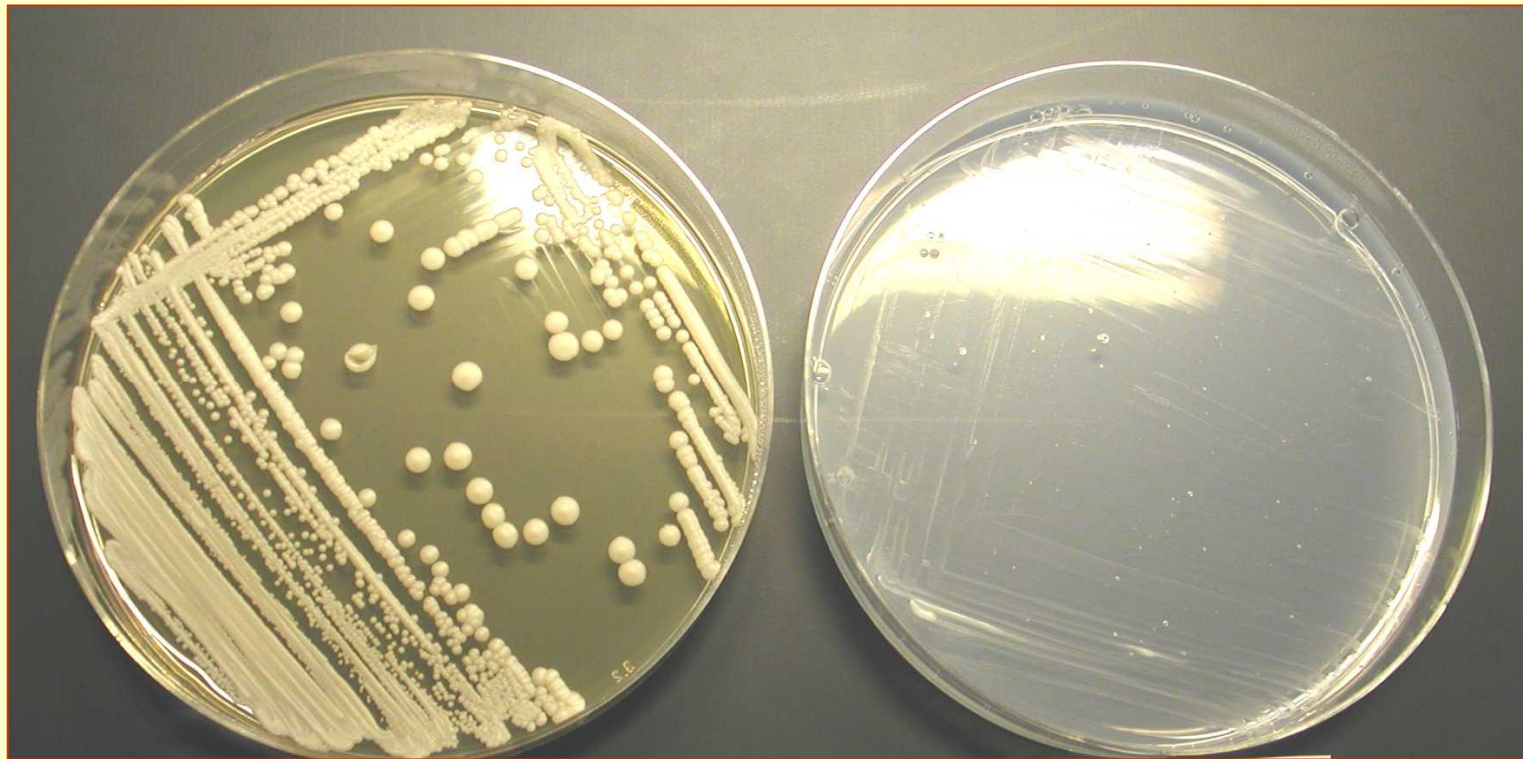
Candida glabrata NCYC 388



YPG-A

Lysin-A

***Candida versatilis* ATCC 60131**



YPG-A

Lysin-A

Candida kefir ATCC 2512



YPG-A

Lysin-A

Candida tropicalis DSM 7524



YPG-A

Lysin-A

***Torula cremoris* ATCC 8553**



YPG-A

Lysin-A

Debaromyces hansenii DSM 70



YPG-A

Lysin-A

Kluyveromyces marxianus IFO 4906



YPG-A

Lysin-A

Hanseniaspora valbyensis CBS 311



YPG-A

Lysin-A

***Pichia anomala* UCSC 25F**



YPG-A

Lysin-A

Zygosaccharomyces bailli DSM 70834



YPG-A

Lysin-A

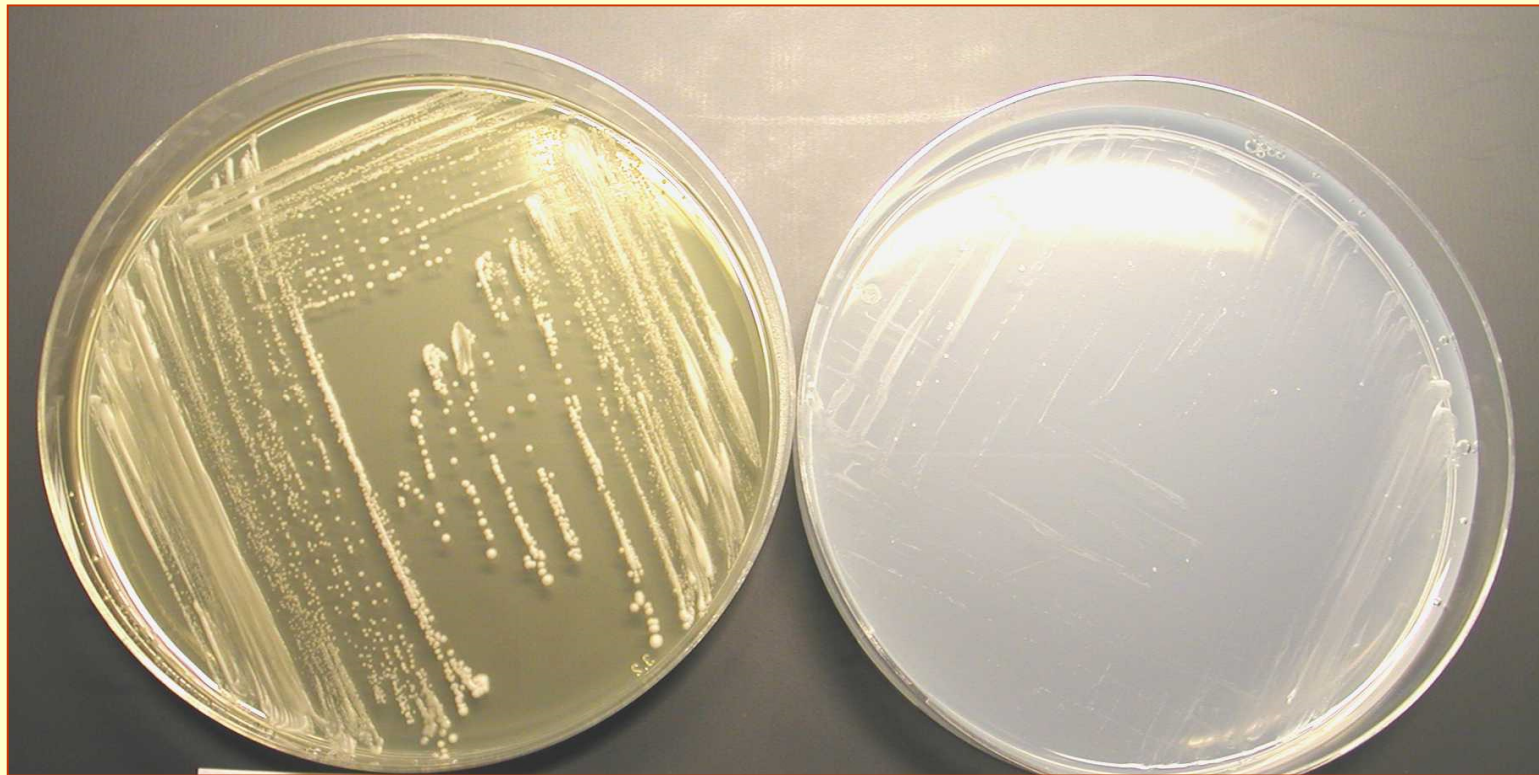
***Yarrowia lipolytica* DSM 1345**



YPG-A

Lysin-A

***Zygosaccharomyces rouxii* DSM 2531**



YPG-A

Lysin-A